

ARK *aptha*



Everything you wanted, **building
with
trust!**

by **ARK**
INFRA DEVELOPERS PVT. LTD

A background of white marble with grey veining.

ARK aptha

aptha (meaning trustworthy in Sanskrit),
was conceptualised keeping your dream home
ambitions in mind. The underlining motto of the project
is to create a sense of belonging in all the apartments.









**a feeling
called home.**

When you buy a home at ARK apha, you don't just buy into the physical space, but also become a part of the trust and legacy ARK Group has built over the years. Each of ARK apha's apartments is a statement of true value, peace of mind and the feeling of home.





ARK *aptha*

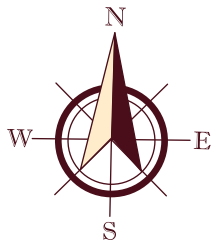
ARK *aptha* features 68 exclusive 2BHK and 3BHK apartments, crafted to make for enriching living experience with amenities and thoughtful landscaping.

Unplug from the world.

Give in to modern lifestyle amenities at ARK aptha.
The project has an air-conditioned gymnasium to keep you fit
and a banquet hall to celebrate all the intimate and grand events of life.



First Floor Plan



26.74m [87'-8"]



-11"]

20.51m [67'-3"]

10.76m [35'-4"]

21.85m [71'-8"]

9'

19'-8"

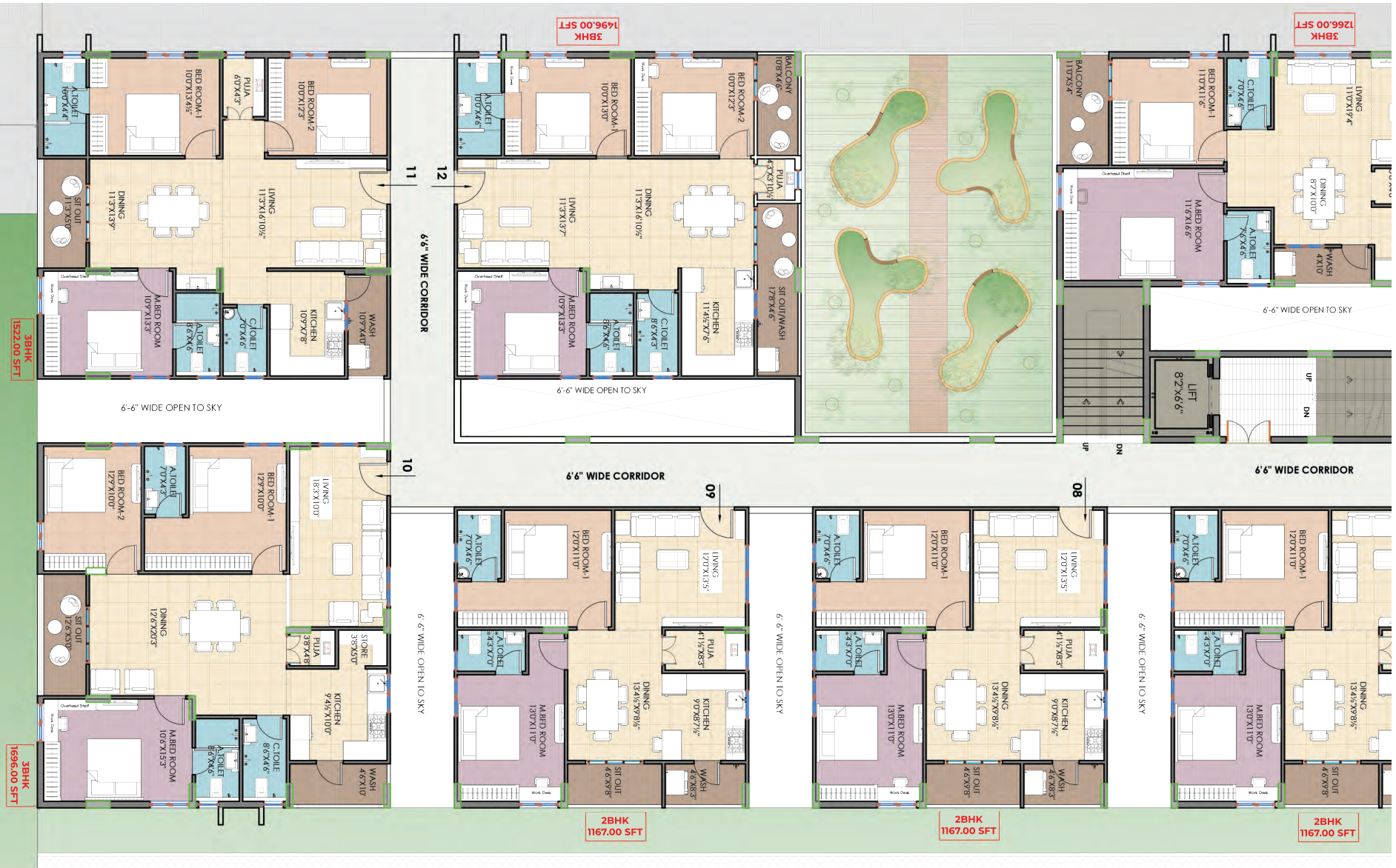
19'-8"

19'-8"

19'-8"

AKA UT PERC. B.000.07

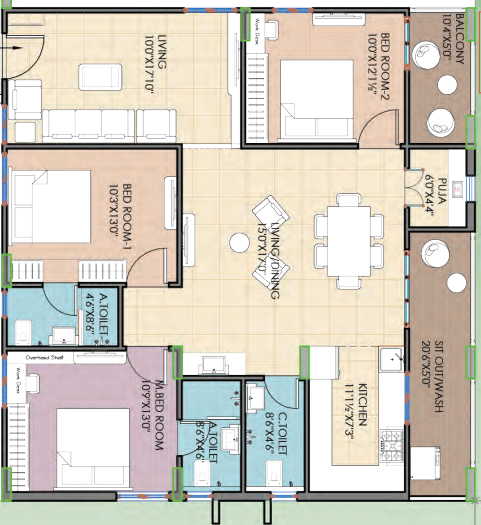
Typical Floor Plan



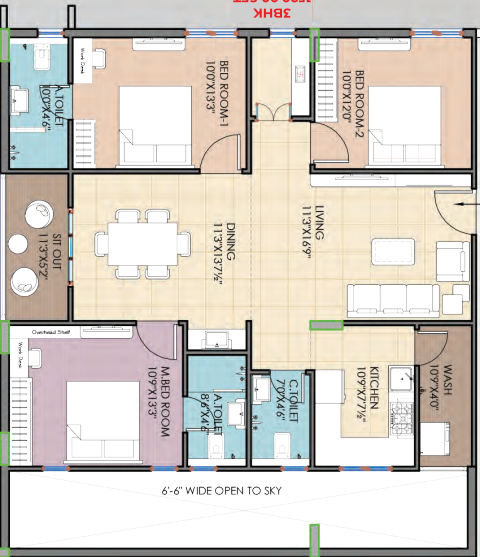
3BHK
1310.00 SFT



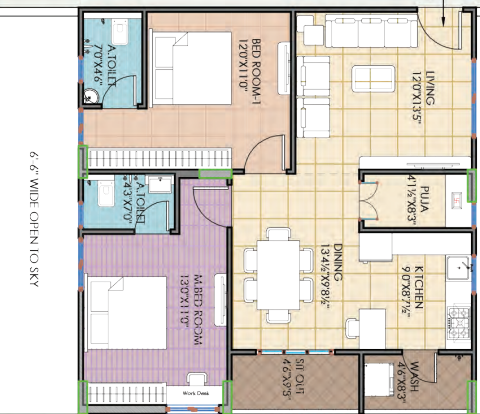
3BHK
1683.00 SFT



3BHK
1520.00 SFT



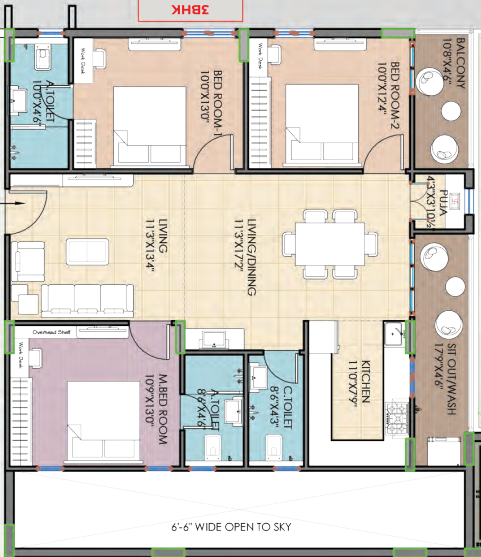
2BHK
1167.00 SFT



2BHK
1167.00 SFT



3BHK
1497.00 SFT



2BHK
1167.00 SFT



13

14

6'-6" WIDE CORRIDOR

6'-6" WIDE OPEN TO SKY

LIFT
8'2" x 6'6"

UP

DN

6'-6" WIDE CORRIDOR

6'-6" WIDE OPEN TO SKY

01

02

6'-6" WIDE CORRIDOR

6'-6" WIDE OPEN TO SKY

03

6'-6" WIDE OPEN TO SKY

6'-6" WIDE OPEN TO SKY

6'-6" WIDE OPEN TO SKY

6'-6" WIDE OPEN TO SKY

Specifications

Structure

RCC framed structure.

Super Structure

CC / Fly ash block masonry in cement mortar.

Plastering

Sponge finished plastering on internal and external walls.

Flooring

Hall, Dining, Bedrooms & Kitchen
Superior Quality Vitrified Tiles (600x600)

Balconies & Wash Area
Good Quality Ceramic Tiles (300x300)

Electrical

Concealed copper wiring of standard make Anchor / Polycab / Havells or equivalent.
3-phase supply for each flat.
Switches of Anchor Roma, MK, Legrand or equivalent.

Joinery Works

Main Door

Teak wood frame and shutters, aesthetically designed with melamine polish with fittings of reputed make.

Internal Door

Teak frame with moulded panelled shutter door with fittings of reputed make.

Windows

UPVC / Aluminium windows.

Painting

Internal

Smooth finish with cement based putty or equivalent over a coat of primer and top finish with two coats of plastic emulsion paint.

External

Premium exterior texture /cement based putty finish with exterior emulsion paint.

Internet

Provision for internet cable for each flat.

Kitchen

Granite countertop with stainless steel sink.
Ceramic tiles dadoing upto 2' height above the kitchen platform.

Toilets

Glazed ceramic tiles dadoing upto 7' height.
Sanitaryware of CERA or equivalent.
All CP fittings of premium quality of CERA / ESS ESS or equivalent make.

Utility / Wash Area

Glazed ceramic tiles dadoing upto 3' height.

Power Backup

DG backup for lifts, common area lighting and all lights and fans inside the flat, except air conditioners and geysers.

Lift

Branded elevator.



The best promises are the ones delivered in time.

ARK's strong portfolio of residential, industrial and institutional projects stands testimony to delivering large scale projects with utmost finesse, being on the front foot of innovation and most importantly in time.

We have delivered projects for:

- TATA Boeing
- Mahindra
- JBM
- Schneider
- TIFR
- TISS
- TTD
- Nuclear Fuel Complex
- Dept. of Atomic Energy
- CPWD
- Decathlon
- GHMC
- FCI
- Konkan Railways
- Sri Venkateshwara Engineering College
- Aurora Group of Institutions
- KITE College of Engineering
- Sagar Group of Institutions
- Vasavi Group of Institutions



Mahindra CIE

JBM Group

Schneider Electric



Location

ARK aptha

Site Location: Siva Sai colony, Kharmanghat, Hyderabad.





Step towards a better future

From facilitating better learning environments for the needy to touching hundreds of farmer lives through the art of poetry, ARK Foundation has gone above and beyond to serve the society and make the world a better place.

The foundation's vision percolates deep in the organisation's roots, which is reflected by the fact that all the employees of ARK Group have pledged for organ donation. Also, societal impact initiatives are also taken up internally by helping employees and their families for better education, lifestyle and providing an environment that supports growth.



Your dreams, delivered!



Real Estate | Infrastructure | Education | Agro Farms

ARK Infra Developers Pvt. Ltd.

4-51/SLNT/L 603, 6th Floor, SLN Terminus, Gachibowli, Hyderabad - 500 032,
Telangana, India.

ARK aptha

Site Location: Siva Sai colony, Kharmanghat, Hyderabad.

TS RERA No. P02400001149

040 2988 0313/14, +91 96520 05688, 96666 89241

Website: aptha.arkgroup.in Email: sales@arkgroup.in

